

Hello!
Bonjour!
Konitchuwa!
Hola!

Welcome to
Year 2

September 2024



Who are we?

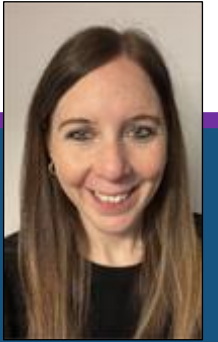
Gilbert Class

Mrs Ismail (Mon-Thurs)
Miss Baker (Fri)
Mrs Oakley
Mrs Catling
Miss Bennett (AM)



Edison Class

Mrs Coldwell (Mon-Wed)
Mrs Healey (Thurs-Fri)
Mrs Cox



Attenborough Class

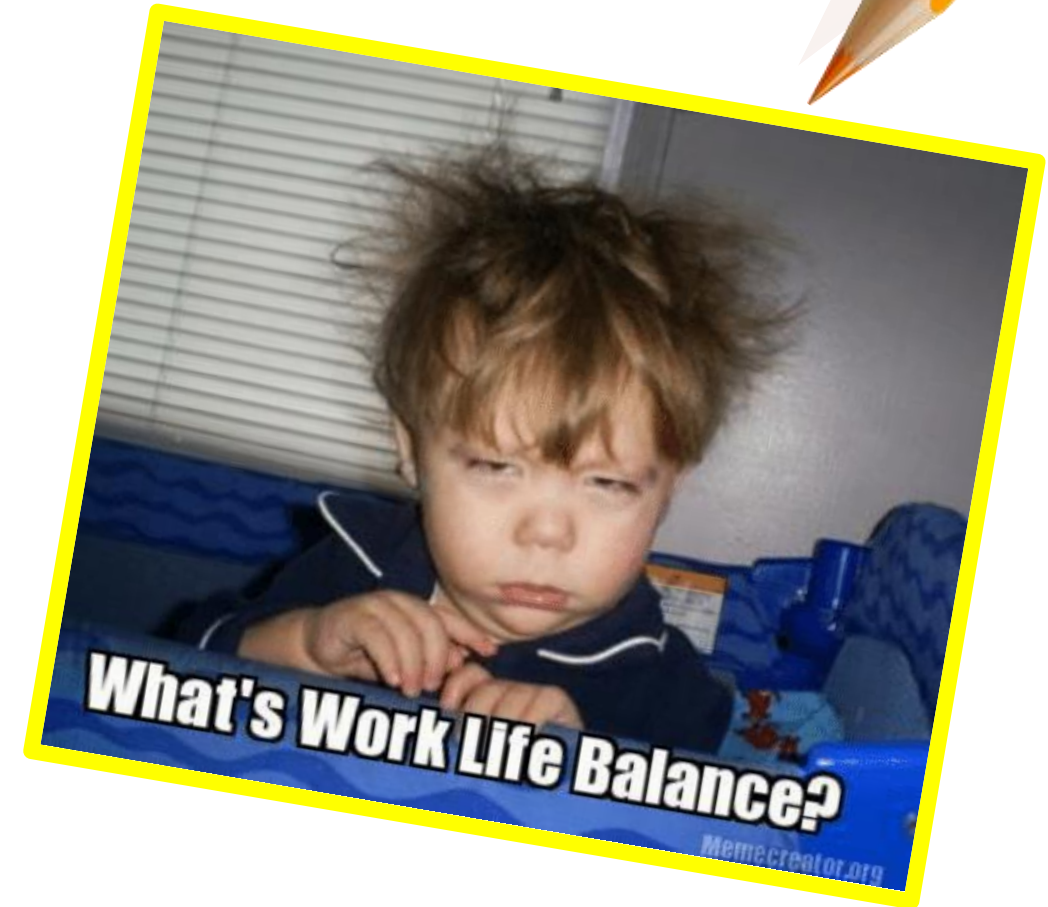
Mr Miller
Mrs Catt



Emails



- Governors duty
- No emails after 5pm Monday-Friday or during weekends and holidays.
- Staff will respond to emails within 48hours
- Urgent enquiries



Termly Overview

A snap shot of
the year to come!

Term 1	What is friendship?
Term 2	Where in the world are we?
Term 3	Who is Samuel Pepys? (Possible trip)
Term 4	How is Kings Hill different to the Arctic? (Walk around Kings Hill)
Term 5	What makes a hero? (Possible workshop)
Term 6	Do all minibeasts have 6 legs?



A typical timetable

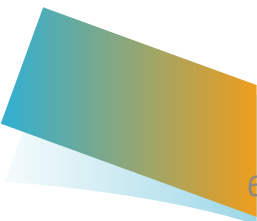
Daily Timetable

8:40- 9:00	Early Morning Work and Register
9:00 -10:00	Maths
10:10-10:25	Break Time
10:25 – 11:00	Phonics/Spelling
11:00 -12:00	English
12:00 -1:00	Lunch
1:00 – 1:30	Guided Reading
1:30 – 2:15	Topic
2:15 – 2:30	Break
2:30 -3:00	Topic
3:00 – 3:15	DEAR
3:15	Home

PE

Tuesdays and
Fridays

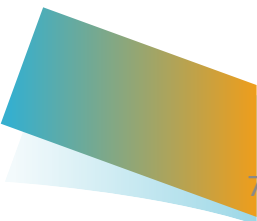
PE lessons will start on Friday 13th September



PE

PE kit
reminders

- Plain t-shirt in 'house' colour, with or without The Discovery School motif.
- Plain navy blue fleece hoodie, with or without The Discovery School Motif
- Navy shorts or skirt.
- Plain navy, black or white trainers for outside sports (no bright or fluorescent colours, glitter or flashing lights)
- During the winter months, children should have a winter sports kit of: navy blue jogging bottoms or plain, long navy leggings.
- No patterns or sports motifs are permitted on any items of PE uniform.
- Earrings must be covered up and long hair to be tied back.



Healthy Snacks



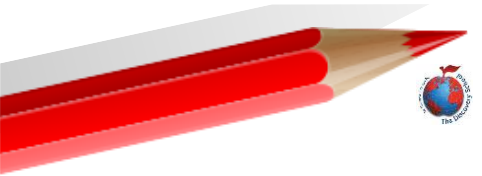
Free fruit in the morning - KS1



Children can bring in a fruit/vegetable based snack, breadsticks, crackers, cheese. No crisps, chocolate or nuts!



Water in bottles, no juice





Homework expectations



Reading – Book change days will be on a Monday and Thursday.



Children will get 2 books on these day.



Children can bring home a class library book- this can be used as a bedtime story.



Spellings – these will be initially linked to the weekly spellings/phonics and common exception words.



Learn It's (Mathematic facts)– Term 2



Times Tables – Term 3 onwards – more information to follow.

Why is reading so important?

Why read 20 minutes at home?

STUDENTS WHO READ:

🕒 20 minutes

PER DAY

3,600 minutes per school year
1,800,000 words per year



SCORE IN THE 90TH
PERCENTILE ON
STANDARDIZED TESTS

STUDENTS WHO READ:

🕒 5 minutes

PER DAY

900 minutes per school year
282,000 words per year



SCORE IN THE 50TH
PERCENTILE ON
STANDARDIZED TESTS

STUDENTS WHO READ:

🕒 1 minute

PER DAY

180 minutes per school year
8,000 words per year



SCORE IN THE 10TH
PERCENTILE ON
STANDARDIZED TESTS

In school reading:

- If you can volunteer
- Even an hour
- Let CT know
- DBS – see office

www.ReadFortWorth.org

Source: Nagy, W. E., R. C. Anderson, and P. A. Herman. 1987. Learning word meanings from context during normal reading. American Educational Research Journal 24: 237–70.

Rewards and expectations



- Value points with the school values.
- Each class has a mixture of behaviour charts, Dojo points and sticker charts to earn prizes and golden time.
- We reward for good listening, trying their best, showing kindness, being ready to learn and showing respect to others.
- We also reward for academic achievement, perseverance and presentation (of themselves and their work).
- Sanctions are followed in line with the school behaviour policy.





School Values and Rewards

Respect, honesty, friendship, kindness and perseverance.

- Rewards – school values, golden time, house points, stickers and star of the week.
- Achievements outside of school (Friday celebration assembly)

Communication



Open door policy



Any problems, come and see us straight away



Email (7.30am-5pm with 48 hour window)



Any important messages need to go to the office (e.g. if someone else is collecting that day)



Check the website for extra information

Communication



Any going home arrangements please email us and the office to keep us informed



Email with clubs that your child attends regularly



All medication (eyedrops, Calpol etc) must go to the office first



Any absences, please include the office in an email to let us and them know



Make sure all clothing is named – lost property



Show and Tell

- Once a week
- It will be led by the children
- Timetables

Any Questions?

