

Welcome to Year 4!



The Current Year Four Team

Thunberg

- Mrs Repsch (Year 4 Leader).
- T.A. Mrs Stiff
- T.A. Miss Gibb



The Current Year Four Team

Berners-Lee

- Mrs Ingles
- T.A. - Miss Dodd
- T.A. - Miss Ball
- T.A. - Ms Ward-Lewis



The Current Year Four Team

Jemison

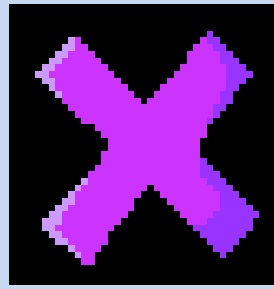
- Miss Meiners
- Miss Ledeczky
- T.A. - Mrs Brown
- T.A. - Mrs Mitchell
- T.A. - Mrs Bridge



Thunberg Timetable Term 1 and 2

	8:40 9:00	9:00 - 10:30		10:30- 10:45	10:45 - 12:15		12:30 - 1:30	1:30- 1:40	1:40 - 3:15		
					10:45-11:15	11:15-12:30					
Monday	Retrieval Practice	English	Assembly - 10:10 - 10:30	Break	Guided reading	Maths	Lunch	DE AR	1:30 - 2:00 - TT practise	2:00 - 3:15 History/Geography	
Tuesday		English	Music assembly - 10:10 - 10:30 Alternated between 881/2		Guided reading	Maths	Lunch	DE AR	1:40 - 2:15 Art	2:15 - 3:15 - P.E (outdoor)	
Wednesday		9 - 9:30 Ukulele English				Guided Reading	Maths	Lunch	DE AR	1:40 - 2:15 Art	2:15 - 3:15 - P.E (indoor)
Thursday		English	Assembly - 10:10 - 10:30		Guided reading	Maths	Lunch			1:40 - 2:00 Spelling	2:00 - 3:15 Science
Friday		8:40 - 9:20 Reading - English	Celebratio n in Assembly 10:30 - 10:30		English	Maths and Library	Lunch			PPA - French & RE / PHSE	

Times Tables



You may be aware that the government introduced the Multiplication Check for all children in Year 4.

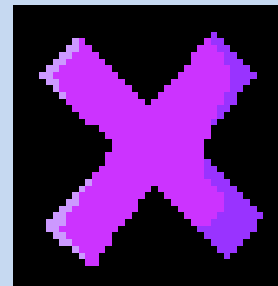
It will take place during June (a similar format to the Y1 phonics screening).

It tests the pupils' recall of their times tables from 2 to 12.

It is computer based - pupils can use iPads, laptops and some have adult support to type if required.

They have 6 seconds to answer each question.

We are doing lots to prepare your children for this so that this is something that they are used to and not a new and daunting experience for them.



Times tables

- Baseline assessment to find out where the pupils are at in September.
- Each week the children will be expected to learn their times tables, focussing on the ones they struggle with.
- TT Rockstars at home will support this too.

The children should be practising their times tables in this order:

- *: 2 5 10 3 4 8
- **: 6 7 9 11 12
- ***: All

PE and Swimming

PE days for Thunberg Class are Tuesday and Wednesday.

PE days for Jemison Class are on a Monday and a Friday.

Berners-Lee Class have PE on a Tuesday (swimming) and Wednesday.

Swimming will take place on a Tuesday and Berners-Lee are the first class to attend. Thunberg Class will be swimming in Terms 3 and 4. Jemison Class will be swimming Terms 5 and 6.

You will receive a letter closer to the event, however so that you can plan ahead here is the general information on the letter:

- It is during school hours and will exclude half term.
- Children can come to school with their swimming costumes on under their PE kit. If they choose to change at the pool, then they must remember that they will only have a short amount of time to do so, therefore you may wish to practise this at home! This is up to you and the children to decide which you prefer.
- Larkfield's swimming lesson policy states that swimming costumes must be one piece and not bikini or tankini and shorts should not be below the knee. Children can wear swim t-shirts if they want to.
- Long hair must be tied back.
- If your child wishes to wear a swimming hat then they will need to put this on independently, prior to the lesson.
- If your child is able to remove their earrings, then this is preferable.
- Children are encouraged to bring their own goggles, even if they are non-swimmers. This often helps with confidence in the pool when learning to swim.

PE and Swimming

For PE, we ask that children come in the correct school uniform.

This includes:

Navy shadow stripe short

Navy Hoodie with The Discovery School logo

PE shirt in the colour of the child's allocated house

All children need trainers for inside and outside sports.

During winter months children should have a winter sports kit of navy blue sweatshirt or navy blue hoodie and navy blue jogging bottoms.

Break and lunchtime



Please ensure that healthy snacks and food are brought into school where possible.


The new draft Food Policy will be sent to you as soon as the DfE has updated its Food Standards.

However, nuts and items that may contain nuts should not come into school so that we can keep everyone safe!

Reading

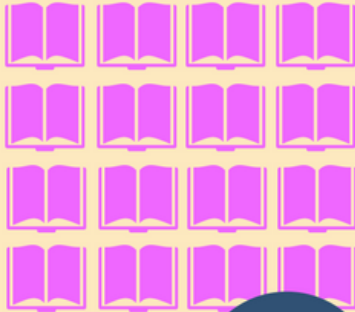
Why read 20 minutes at home?

STUDENTS WHO READ:

 20 minutes


PER DAY

3,600 minutes per school year
1,800,000 words per year



SCORE IN THE 90TH
PERCENTILE ON
STANDARDIZED TESTS

STUDENTS WHO READ:

 5 minutes

PER DAY

900 minutes per school year
282,000 words per year



SCORE IN THE 50TH
PERCENTILE ON
STANDARDIZED TESTS

STUDENTS WHO READ:

 1 minute

PER DAY

180 minutes per school year
8,000 words per year



SCORE IN THE 10TH
PERCENTILE ON
STANDARDIZED TESTS

www.ReadFortWorth.org

Homework Expectations

- **Reading every night** - to be recorded in the reading record, which we would like to see on a Tuesday and Friday.
- **Times tables** - the children must spend some time learning their tables each week.
- **Weekly spellings pattern.**
- **Additional tasks will be available on Purple Mash linked to a current topic or on Reading Plus.**

Reading Trees!

- We are carrying on with our popular Reading tree this year. There will be 36 high quality books will be in each class.
- The list of these books is n the school website and sent home.
- The aim is for children to read 30 books to earn a Gold Certificate.
- If they read 20 books, they can earn a Silver Certificate.
- If they read 10 books, they can earn a Bronze Certificate!
- Children can read these books to you, and you can read them to your child.
- Books can be taken home, but we ask that they are well looked after and returned! Staff from each class will be monitoring which books are going home.
- Children will be encouraged to take responsibility to record when they have read each book, so they know when they have completed the challenge!



Expectations for Year 4 pupils.

- **Greater independence** - working walls, class dictionaries.
- **Develop a greater sense of resilience and maturity**
- **Always putting in 100% effort.**
- **High expectations of presentation and behaviour.**
- **Children are encouraged to bring a healthy snack at break time - no chocolate, crisps or nuts.**
- **Polite, kind and courteous behaviour - follow the school values of honesty, friendship, kindness, respect and perseverance.**
- **Always smartly dressed in correct uniform (labelled please). This includes the correct PE kit.**

Our aim - to have all children issued with a pen licence by the end of Year 4.

Tuesday Monday 20th July 2021
L.I. to Plan a letter. 😊

Introduction Make it clear why you are writing. Start with 'Dear'	Dear Year R children I heard that you are joining our wonderful school. I'm writing to you to tell you all
First Day Experience Start with a clear topic sentence and explain what the first day was like.	<ul style="list-style-type: none"> On your first day you might have butterflies in your tummy But your teacher will greet you well Your teacher will show you where you put your things
Things to look forward to Start with a clear topic sentence and explain what things the children can look forward to.	<ul style="list-style-type: none"> There are lots of things to look forward to YR You will get to go on a amazing school trip to a farm Most best of all fish and chips on Friday Also you can and you can make new friends.
What they will be able to do inside and outside Start with a clear topic sentence and explain what things the children can look forward to.	<ul style="list-style-type: none"> When you play inside, you can draw and You can play with toys such as train tracks, dolls, and doll houses. When you are outside you can play on a amazing adventure play climbing playground and you can play in a house outside and play in it.
Conclusion Explain how much we are looking forward to meeting them.	All the teachers are so excited to see you and in September I am very sure you will be so excited, soon sent

6/1/2022 Day 1 Week 1

1. $9 \times 1 = 9$ ✓

2. $10 \times 38 = 380$ ✓

3. 8,000 m ✓

4. Annie: 14 hours
 Ron: 15 hours Ron walks for longer ✓

$5 \times 2 = 10$ ✓

6/1/2022
 How do we multiply a three digit number by a one digit number? ✓ 😊

a) $6 \times 106 = 636$ ✓

$$\begin{array}{r} 106 \\ \times 6 \\ \hline 636 \end{array}$$

b) $4 \times 209 = 836$ ✓

$$\begin{array}{r} 209 \\ \times 4 \\ \hline 836 \end{array}$$

c) $317 \times 3 = 951$ ✓

$$\begin{array}{r} 317 \\ \times 3 \\ \hline 951 \end{array}$$

e) Both are correct ✓

Rewards and Sanctions

- **Rewards**

- Stickers, house points, postcards of praise, behaviour ladder, star of the week, head teacher awards, deputy head awards, excellence awards, and share good work with other classes and staff.
- Reward time earned.

- **Sanctions**

- warnings, isolated learning within class or within the year group, missed minutes from playtimes.
- Sent to Year Group Leader or members of the SLT as set out in the behaviour policy.
- Parents informed as appropriate.

Term 1 and 2

What did the Romans bring to Britain?

Enrichment opportunity: cooking outdoors, Roman Britain trip TBC

Term 3 and 4

What makes our world wonderful?

Enrichment opportunity: outdoor learning activity

Term 5 and 6

What makes the Anglo-Saxons special?

Enrichment opportunity: external workshop TBC

English – Do all people have the same dreams?

Key Texts: Little People, BIG DREAMS

Writing genres: Biographical writing

SPaG and reading comprehension skills taught through key texts.

PSHE – How can we look after our wellbeing?

How can we be a good friend?

What is diversity?

Dyslexia

Music – Ukulele

Recognising chords

Copying and repeating patterns

Art and Design –What's in a portrait?

Exploring tints, tones and shades

Artist study – Amedeo Modigliani

Developing artistic skills using watercolours and acrylics

RE – What does it mean to be a Hindu in Britain today?

How do people from religious and non-religious communities celebrate key festivals?

Science – What is sound and how do we hear?

Understanding and explaining what sound is, how it is formed, how it travels and how we can manipulate different sounds.

French - How can we build on our existing French knowledge?

Listening and responding, speaking, reading, writing and inter-cultural skills.

Computing

Use Lego Wedo to solve algorithm problems and use basic code.

Understand and debug simple code.

PE

Outdoor: How can we use a range of skills and tactics to improve our performance?

- Netball

Understand the basic rules

Develop passing, defending and attacking skills

Use key skills in a game situation

- Dance – Cheerleading

Develop fundamental skills and movement

Develop rules and teamwork

LITTLE PEOPLE, BIG DREAMS



Learning updates & Year group page

HOME ABOUT US CURRICULUM ADMISSIONS CLASSES COMMUNITY CONTACT PUPILZONE

YOU ARE HERE: HOME > CLASSES > YEAR 4

Year 4

Welcome to Year 4 at The Discovery School!

Year 4 is made up of 3 classes and we are located in the Cathedral End of the school.

Thunberg
Mr Stannard (Year 4 Lead)
Mrs Palmer

Classes

- EYFS
- Year 1
- Year 2
- Year 3
- Year 4**
- Year 5
- Year 6

YOU ARE HERE: HOME > CURRICULUM > LEARNING UPDATES

Learning Updates

The children at the school are always taking part in exciting learning. You can see their learning updates by clicking on the relevant year group below:

Whole School Learning Updates

- EYFS Learning Updates
- Year 1 Learning Updates
- Year 2 Learning Updates
- Year 3 Learning Updates
- Year 4 Learning Updates
- Year 5 Learning Updates
- Year 6 Learning Updates

Curriculum

- Our Curriculum
- Supporting Parents with Remote Learning
- Results from pupil and parent surveys around remote learning March 2021
- Zoo that Gap!
- Social, Emotional and Mental Health and Wellbeing
- Special Educational Needs and Disabilities
- PE & Sports Funding
- Phonics
- Computing & Online Safety
- Future Technology
- Forest School and outside learning
- Learning Updates**
- Science Zone

<https://www.discovery.kent.sch.uk/year-groups/year-4/>

<https://www.discovery.kent.sch.uk/curriculum/learning-updates/year-4-learning-updates/>



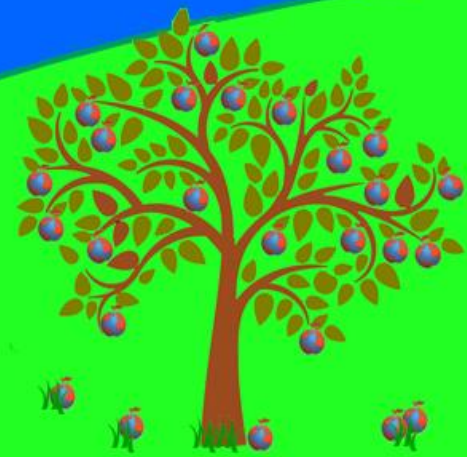
Our music offer

@ The Discovery School

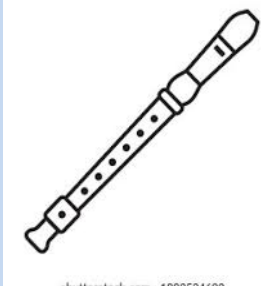
The Discovery School



Learning a Voyage of Discovery



Whole class ensemble teaching - wcet



Recorder

Y3



Ukulele

Y4



Djembe

Y5





y4 Whole class UKULELE lessons

In Year 4, all pupils learn how to play the ukulele as part of their music curriculum.

Ukulele lessons are delivered by a specialist Music Teacher and are part funded by the Music Plus Scheme.

Each class will receive a 30-minute lesson per week throughout the whole academic year..

The lessons develop children's musicianship skills as well as their confidence in playing and performing together.

Children are able to borrow a school ukulele for their lessons but can purchase their own instrument if they choose.

The year's programme will culminate in an end of year performance to parents to celebrate progress.

The Discovery School

Learning a Voyage of Discovery

Co-curricular music

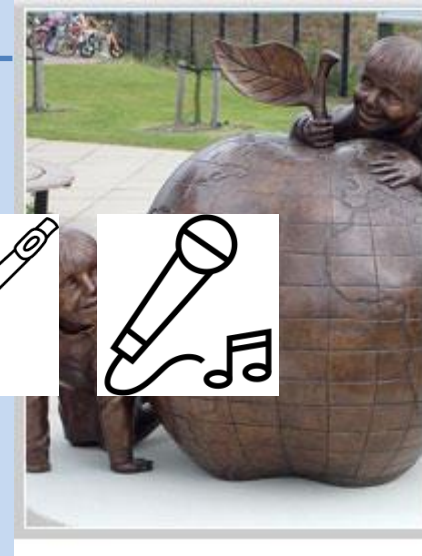
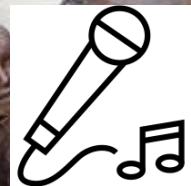
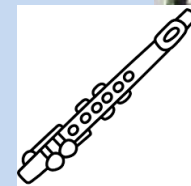
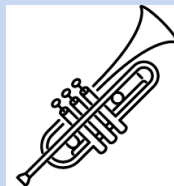
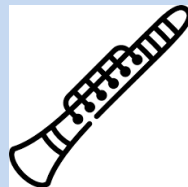
All children from year 1 to 6 have the opportunity to learn a range of instruments as part of the school's co-curricular offer.

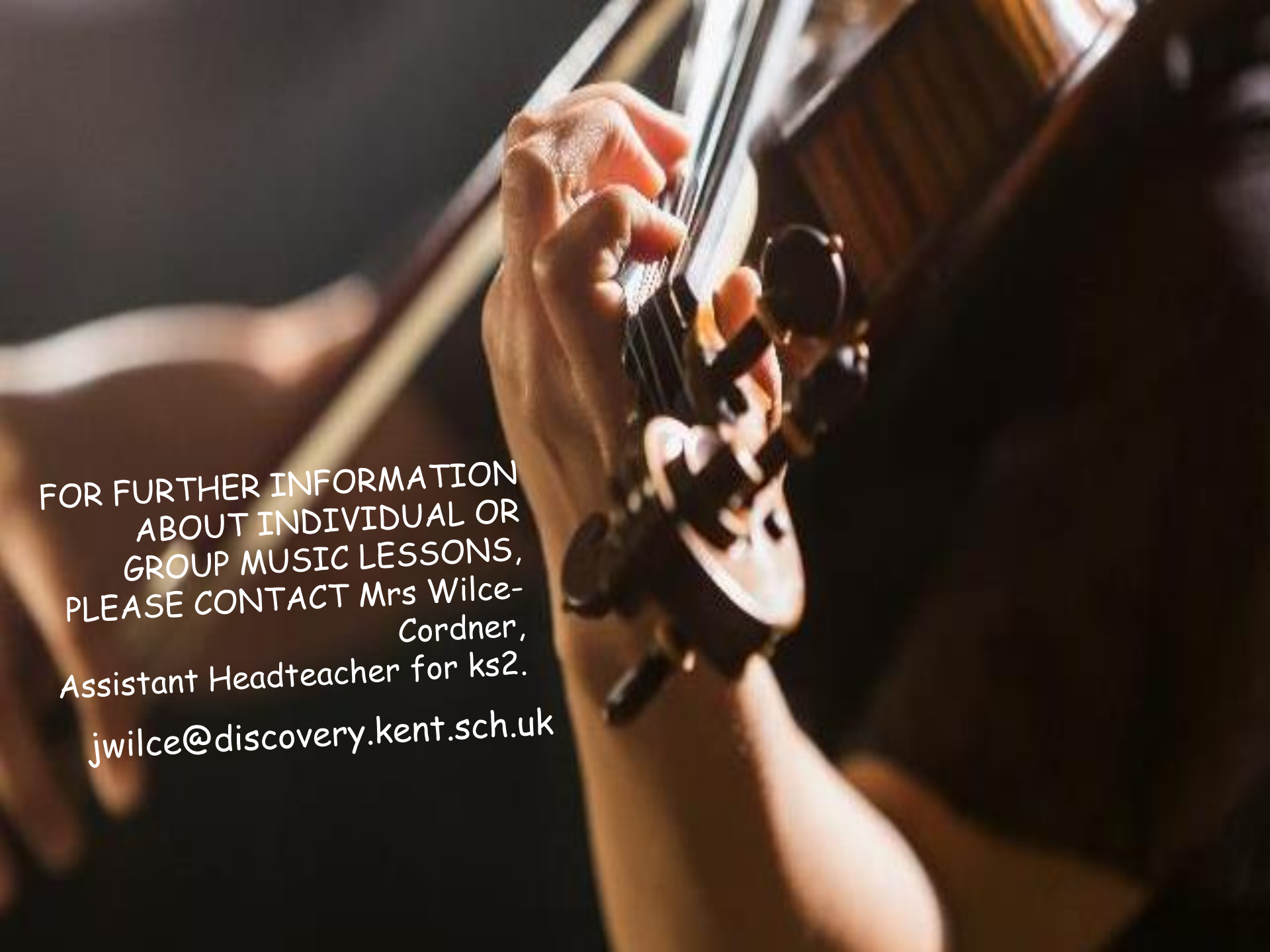
Lessons are delivered by independent peripatetic tutors and take place during the school day.

The tutors liaise with class teachers and rotate lesson times each term to avoid children missing the same subjects.

Children can choose to learn the piano, violin, electric guitar, clarinet, flute, cornet, trumpet, saxophone, classical guitar or continue with the ukulele.

Children can also learn to play as part of a band selecting either drums, keyboard, lead guitar, bass guitar or vocals.





FOR FURTHER INFORMATION
ABOUT INDIVIDUAL OR
GROUP MUSIC LESSONS,
PLEASE CONTACT Mrs Wilce-
Cordner,
Assistant Headteacher for ks2.
jwilce@discovery.kent.sch.uk

Pick-up

- Some children in Year 4 may need to walk home with older siblings in Year 5 and 6. If this is the case, you will need to email your wishes in advance to your child's class teacher. They will then need to discuss the arrangements with you before agreeing - we cannot agree to this on the day, without having had a discussion with you first.
- This also applies if you want your child to walk home on their own.

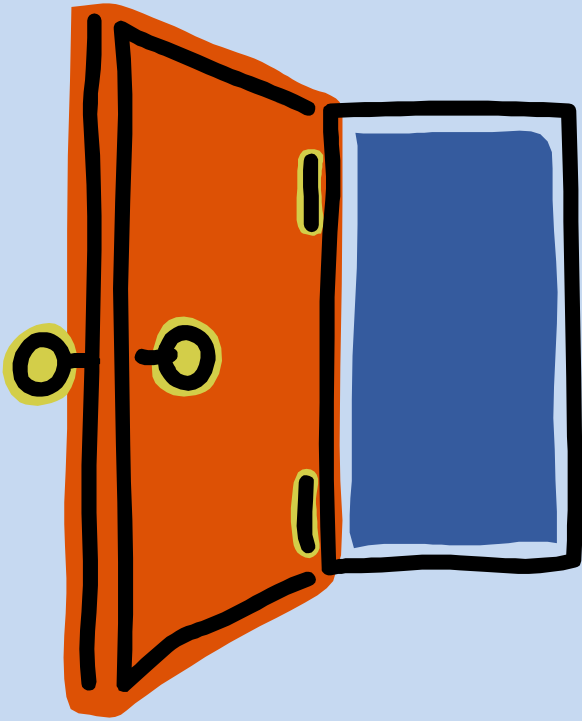
Absences

- Please make sure that if you are emailing your child's class teacher to report an absence, you also email the school office (office@discovery.kent.sch.uk)
- Alternatively, you can phone and leave a message if the office is not open yet.

Medication

- All medication must be taken to the school office by an adult as it needs to be signed in.
- We are unable to administer any medication children bring into the classroom.

Open Door



- Telephone 01732 847000
- Email office - change of pick up, appointments, absence.
- office@discovery.kent.sch.uk
- You can email your class teacher and staff will respond to e-mails within 48 hours between the hours of 7:30am - 5pm. If the email appears to be of a complex nature, we will usually invite you to come into school and meet with us if appropriate or telephone you.
- Class teacher emails:
jrepsch@discovery.kent.sch.uk (Year 4 Leader)
ringle@discovery.kent.sch.uk
hmeiners@discovery.kent.sch.uk
eledeczky@discovery.kent.sch.uk (please email both Miss Meiners and Miss Ledeczky for Jemison class)

Any questions?

